

Drain: THISTLEWOOD DRAIN **Drain #:** 189
Improvement/Arm: THISTLEWOOD - SECTION 3
Operator: JOH **Date:** 6-7-04
Drain Classification: Urban/Rural **Year Installed:** 1987

GIS Drain Input Checklist

- Pull Source Documents for Scanning JOH
- Digitize & Attribute Tile Drains N/A
- Digitize & Attribute Storm Drains JOH
- Digitize & Attribute SSD JOH
- Digitize & Attribute Open Ditch N/A
- Stamp Plans JOH
- Sum drain lengths & Validate JOH
- Enter Improvements into Posse JOH
- Enter Drain Age into Posse JOH
- Sum drain length for Watershed in Posse JOH
- Check Database entries for errors JOH

Gasb 34 Footages for Historical Cost
Drain Length Log

Drain-Improvement: THISTLEWOOD GRAIN - THISTLEWOOD SECTION 3

Drain Type:	Size:	Length <i>SURVEYED PIPING</i>	Length (DB Query)	Length Reconcile	Price:	Cost:
<i>SSD</i>	<i>6"</i>	<i>1010'</i>	<i>1010'</i>	<i>Ø</i>	<i>2.00</i>	<i>2020.00</i>
<i>RCP</i>	<i>12"</i>	<i>393'</i>	<i>393'</i>	<i>Ø</i>	<i>7.25</i>	<i>2849.25</i>
	<i>15"</i>	<i>385'</i>	<i>385'</i>	<i>Ø</i>	<i>9.50</i>	<i>3657.50</i>
	<i>18"</i>	<i>704'</i>	<i>704'</i>	<i>Ø</i>	<i>10.50</i>	<i>7392.00</i>
	<i>27"</i>	<i>267'</i>	<i>267'</i>	<i>Ø</i>	<i>21.30</i>	<i>5687.10</i>

Sum: *2,759* *2,759'* *Ø* *21,605.85*

Final Report: _____

Comments:



SURVEYOR'S OFFICE

Hamilton County

Kenton C. Ward, Surveyor

773-6110 Ext. 19

Noblesville, Ind. 46060 June 5, 1987

TO: Hamilton County Drainage Board

RE: Thistlewood Drain-Section 3

Attached is a petition, non-enforcement request, plans, calculations, Quantity summary and assessment roll for Thistlewood, Section 3 Drain.

I have reviewed the submittals and petition and have found each to be in proper form.

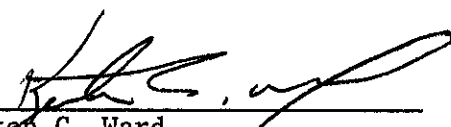
I have made a personal inspection of the land described in the petition. Upon doing so, I believe that the drain is practicable; will improve the public health; benefit a public highway and be of public utility; and that the costs, damages and expenses of the proposed drain will probably be less than the benefits accruing to the owners of land likely to be benefitted. The drain will consist of the following:

6"	SSD	1010ft	18"	RCP	524ft
12"	RCP	423ft	27"	RCP	225ft
15"	RCP	535ft			

The total length of the drain will 2717 feet.

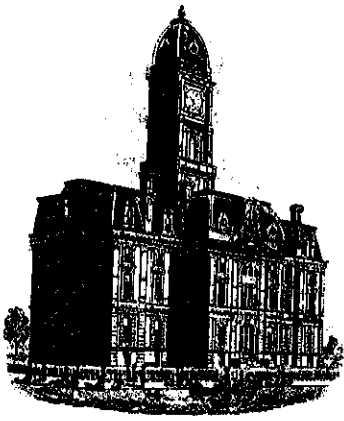
I have reviewed the plans and believe the drain will benefit each lot equally. Therefore, I recommend each lot be assessed equally. I recommend a maintenance assessment of \$25.00 per lot, \$2.00 per acre for roadways. With this assessment the total annual assessment for the drain/this section will be \$635.00.

I recommend a hearing be set for August 1987.



 Kenton C. Ward
 Hamilton County Surveyor

KCW/no



SURVEYOR'S OFFICE
Hamilton County

Kenton C. Ward, Surveyor

773-6110-Ext-19
776-9626

Noblesville, Ind. 46060 October 27, 1987

TO: Hamilton County Drainage Board

RE: Thistlewood Drain, Section 3

On October 1, 1987 I made the final inspection of the drainage facilities for the Thistlewood Drain, Section 3. At that time I found the said facilities complete and acceptable.

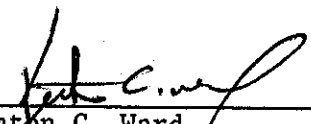
Only slight changes were made in the construction of the facilities which did not alter the original concept of the drain. These changes are as follows:

1. Metal end section was installed at the North East corner of Lot 33 in lieu of a beehive because of cover and depth of swale.
2. 18" RCP used instead of 15" from Northwest corner of Lot 30 to Northwest corner of Lot 37 and the cross pipe between curb inlets at intersection of Goldfinch Drive and Thistlewood Drive East.
3. Instead of placing a manhole in the existing 27" line from Section 2 a man hole was installed and an additional 42' of 27" RCP installed parallel to the existing and outletting into the detention area.

The total length of the drain as constructed is 2759 feet.

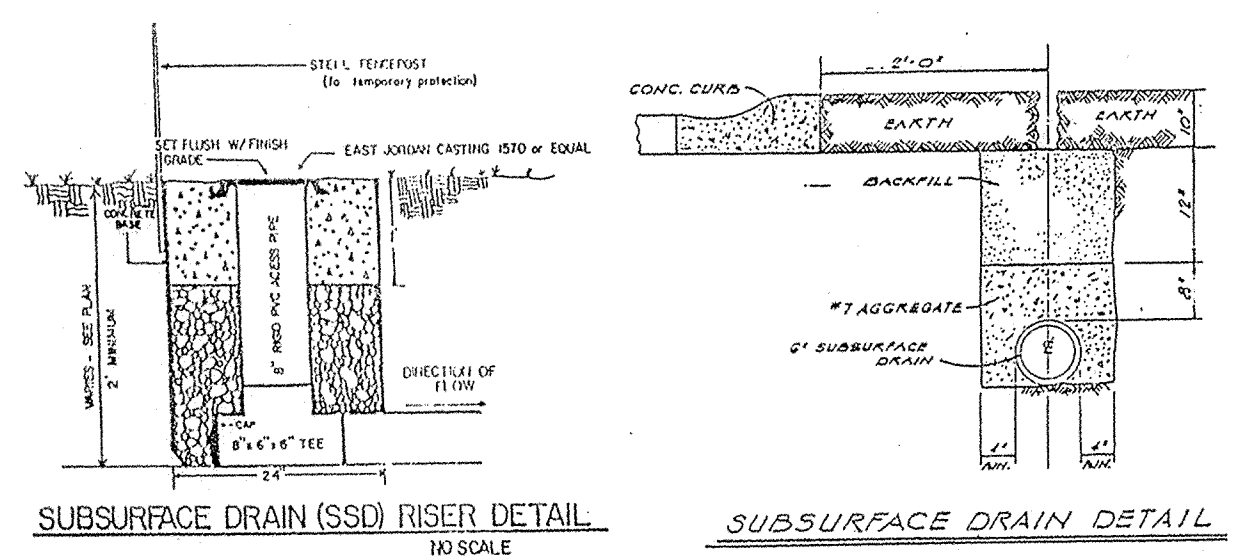
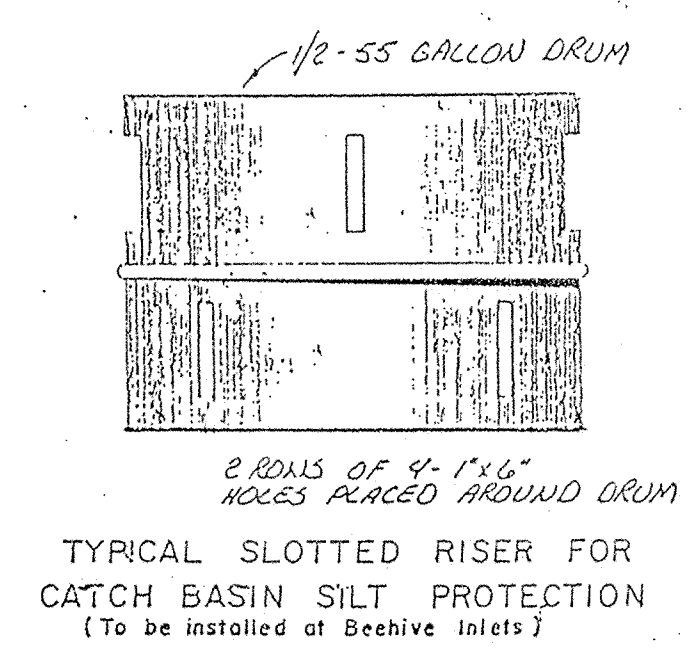
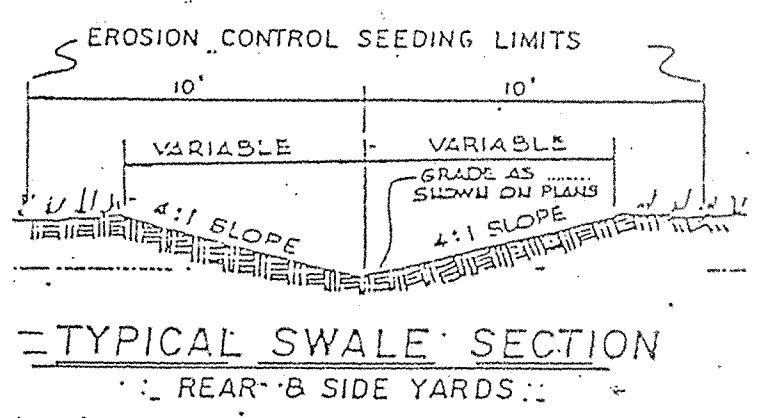
A mylar as built has been submitted along with a Certificate of Completion and Compliance. Therefore, I recommend the Board approve the drainage facilities as constructed.

I further recommend that the Board approve the attached non-enforcement of easement for this drain.


Kenton C. Ward
Hamilton County Surveyor

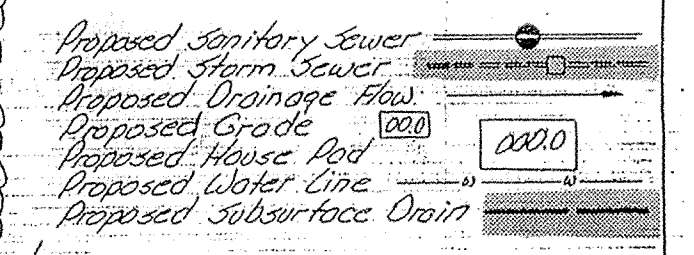
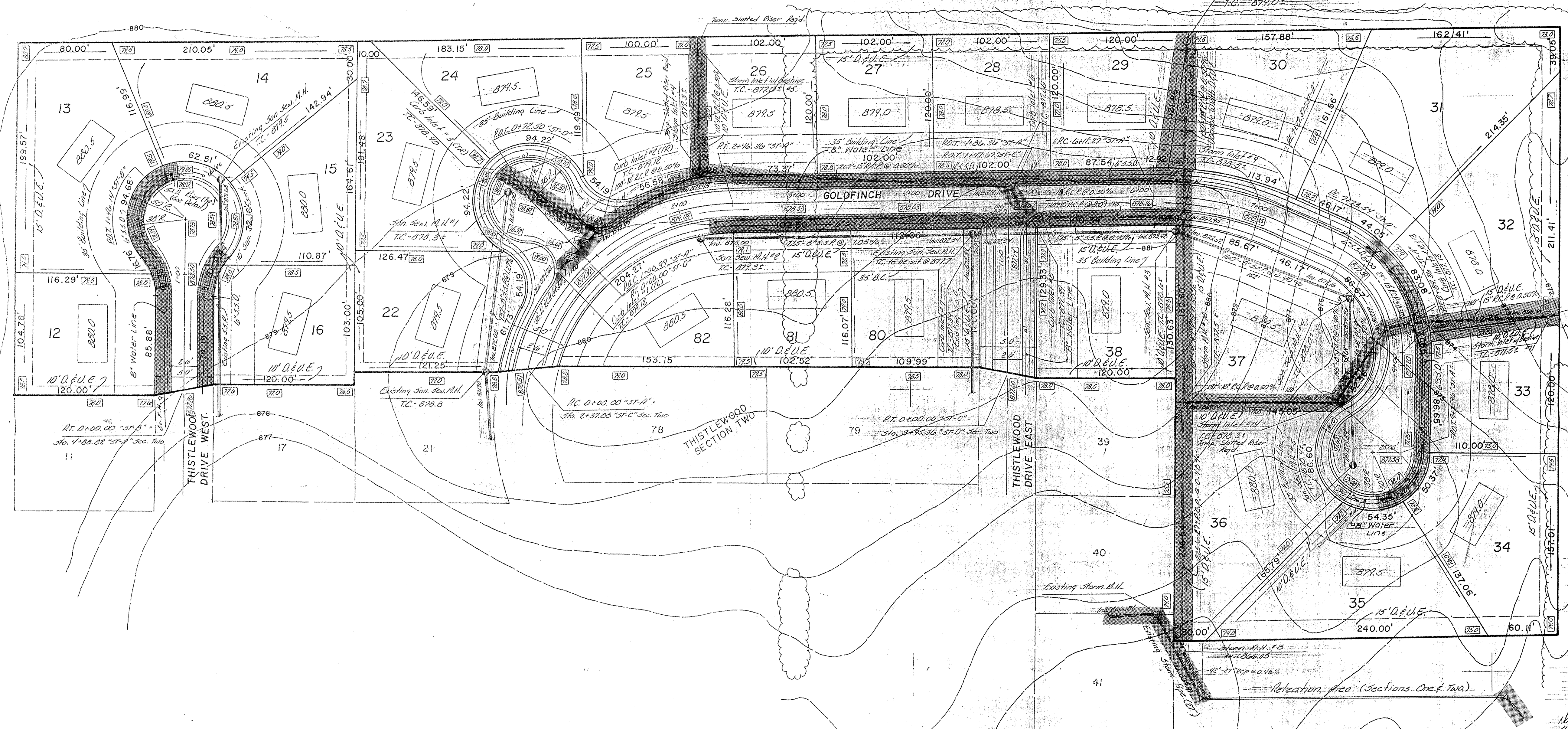
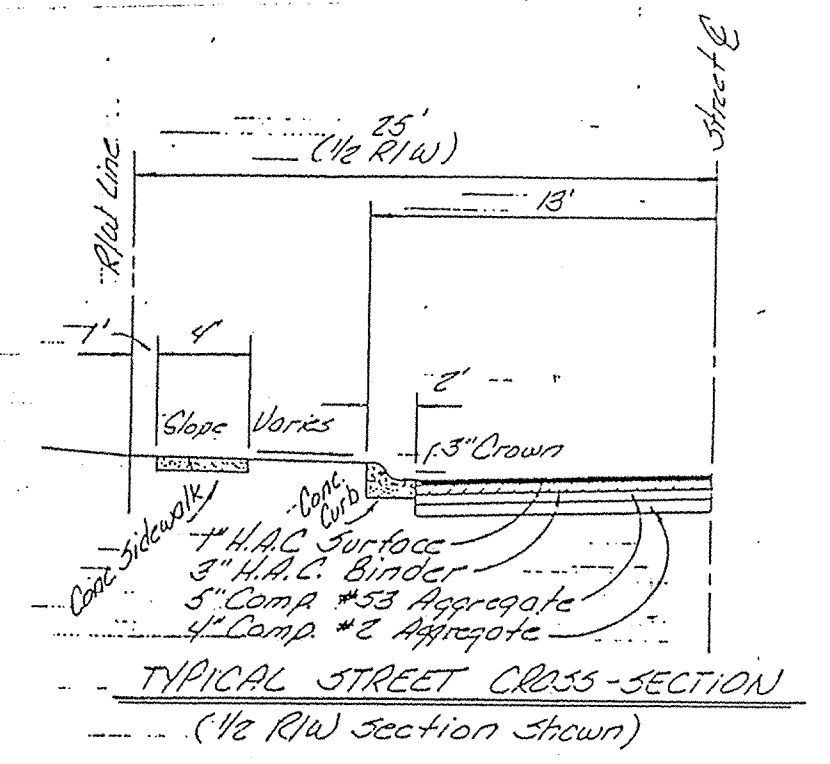
KCW/no

- EROSION CONTROL:**
- A temporary seeding mixture in the areas of where stripping of fills has been graded shall be seeded for silt erosion protection. After grading all construction areas are to be seeded as follows:
- Swale seeding: Seed and fertilize within construction limits with 50#/Acre "Redtop" grass, 20#/Acre "Rye Grass", 20#/Acre "Bluegrass", 25#/Acre "Fescue" and 600#/Acre 12-12-12 Fertilizer.
 - Cut/Fill Seeding (Along Paved Areas): Seed and fertilize with 25#/Acre "Fescue", 20#/Acre "Rye Grass", 15#/Acre "Bluegrass" and 600#/Acre 12-12-12 Fertilizer.
 - Seeded areas shall have a suitable mulch applied for EROSION AND SILT CONTROL. Mulch may be straw, shredded hardwood or erosion control mat.
 - Developers Option: Construction Areas requiring Erosion Control may be hydroseeded in accordance with above Seed and Fertilizer Specifications.



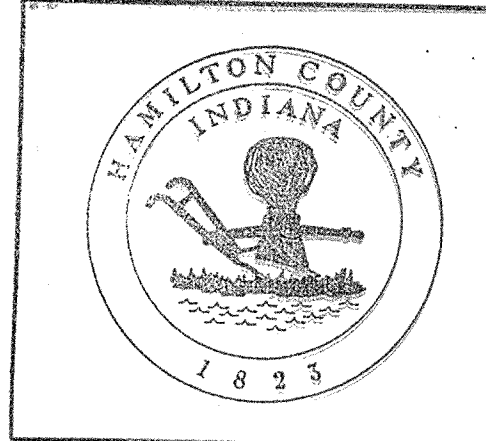
It shall be the responsibility of each contractor to verify all existing utilities and conditions pertaining to his phase of the work. It shall also be the contractor's responsibility to contact the owners of the various utilities before work is started. The contractor shall notify in writing the owners or the engineers of any changes, errors or omissions found on these plans or in the field before work is started or resumed.

NOTE: STREET CONSTRUCTION TO BE INSTALLED PER CURRENT COUNTY HIGHWAY SPECIFICATIONS AT THE TIME OF CONSTRUCTION.



T&M: North on Indiana Bell M.H. Co. Mail corner, 24th St. Oak Ridge Road. Elev. 878.52
 T&M: 1/4" NW 1/4, R23-1539, 350' West of church property, South side of 156th Street - Elev. 875.97

Note: Elevations shown herein are planned & subject to change. Final elevations may have to be adjusted at time of construction.



This information was gathered for input into the Hamilton County Geographical Information System. This document is considered an official record of the GIS.

Entry Date: 6-7-04
 Entered by: JDH



Allan H. Weihe
 ALLAN H. WEIHE, REG. PE., INDIANA, 8827

WEIHE ENGINEERS INC.
 10505 NORTH COLLEGE AVENUE
 INDIANAPOLIS, INDIANA 46280
 (317) 846-6611

LAND PLANNERS
 LAND SURVEYORS
 CIVIL ENGINEERS

DATE BY	108.10	DATE	
BY	AS	DATE	
DRAWN BY	AS	CHECKED BY	MLT
DATE	11-17-03	DATE	
REVISIONS		PAGE	3
1. (As shown on T&M) (see notes)		F.B.	
2. (As shown on T&M) (see notes)			
3. (As shown on T&M) (see notes)			
4. (As shown on T&M) (see notes)			
5. (As shown on T&M) (see notes)			
6. (As shown on T&M) (see notes)			
7. (As shown on T&M) (see notes)			
8. (As shown on T&M) (see notes)			
9. (As shown on T&M) (see notes)			
10. (As shown on T&M) (see notes)			
11. (As shown on T&M) (see notes)			
12. (As shown on T&M) (see notes)			
13. (As shown on T&M) (see notes)			
14. (As shown on T&M) (see notes)			
15. (As shown on T&M) (see notes)			
16. (As shown on T&M) (see notes)			
17. (As shown on T&M) (see notes)			
18. (As shown on T&M) (see notes)			
19. (As shown on T&M) (see notes)			
20. (As shown on T&M) (see notes)			
21. (As shown on T&M) (see notes)			
22. (As shown on T&M) (see notes)			
23. (As shown on T&M) (see notes)			
24. (As shown on T&M) (see notes)			
25. (As shown on T&M) (see notes)			
26. (As shown on T&M) (see notes)			
27. (As shown on T&M) (see notes)			
28. (As shown on T&M) (see notes)			
29. (As shown on T&M) (see notes)			
30. (As shown on T&M) (see notes)			
31. (As shown on T&M) (see notes)			
32. (As shown on T&M) (see notes)			
33. (As shown on T&M) (see notes)			
34. (As shown on T&M) (see notes)			
35. (As shown on T&M) (see notes)			
36. (As shown on T&M) (see notes)			
37. (As shown on T&M) (see notes)			
38. (As shown on T&M) (see notes)			
39. (As shown on T&M) (see notes)			
40. (As shown on T&M) (see notes)			
41. (As shown on T&M) (see notes)			

Approved For: Mr. Robert Cassarino, Carmel, Indiana
 Development Plan - Thistlewood Section Three

SHEET NO. 2 OF 6